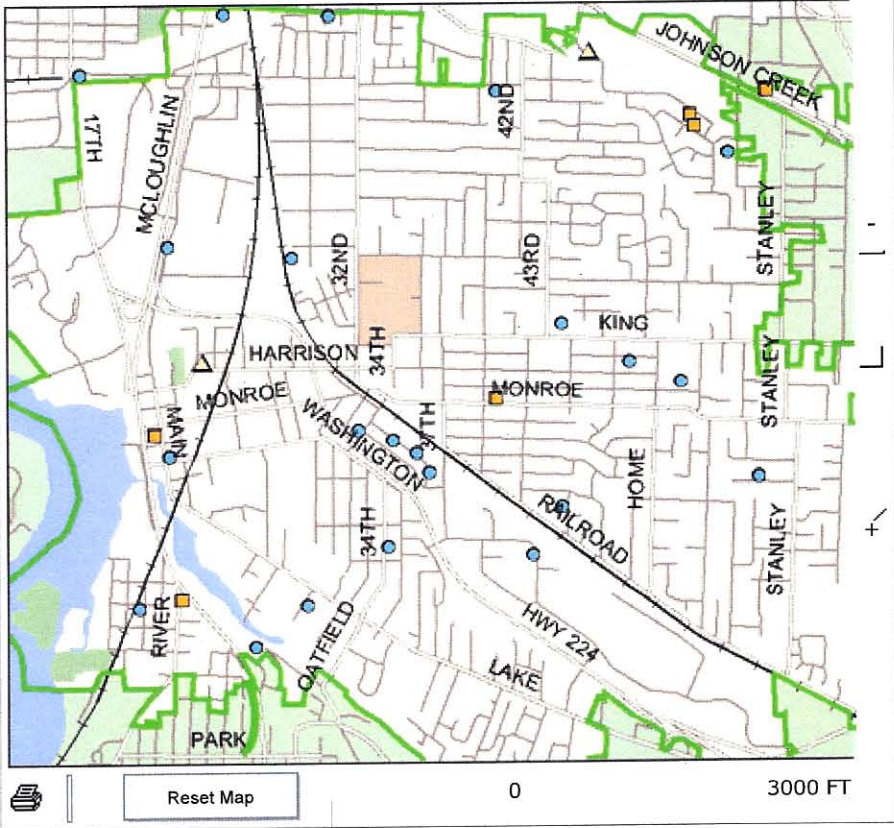


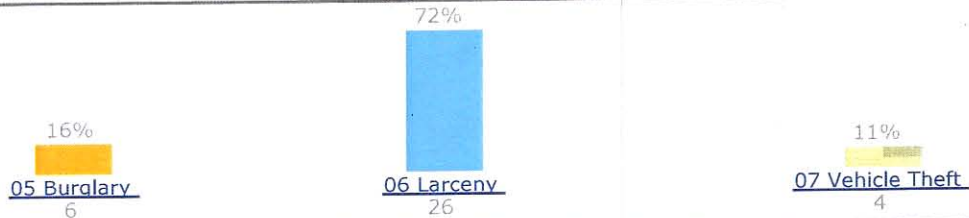
CAMIN

Portland Police Bureau - Offense Report

Area	Agency - MILWAUKIE POLICE City - MILWAUKIE
Date Range	03/01/12 00:00 - 03/31/12 23:59
Types	01 Homicide, 02 Rape, 03 Robbery, 04 Aggr Assault, 05 Burglary, 06 Larceny, 07 Vehicle Theft, 09 Arson
Map Legend	<ul style="list-style-type: none"> ■ 05 Burglary ● 06 Larceny ▲ 07 Vehicle Theft
Disclaimer	<p>Data extracted from CAMIN2 on 04/09/12. Data current as of 04/09/12 19:00. One point may represent more than one incident. Some incidents have no address and are not represented.</p> <p>FOR LAW ENFORCEMENT USE ONLY</p>



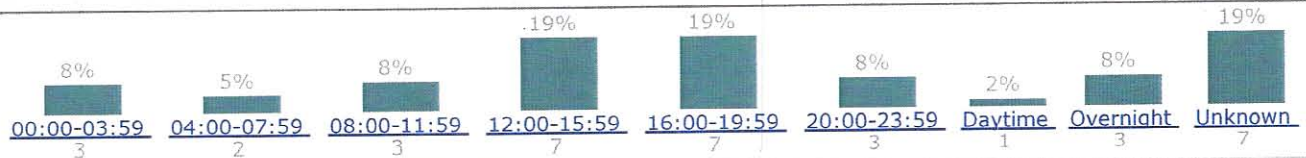
Offense Types



Day Of Week



Time Of Day



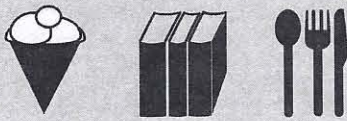
Draft Vision Statement

From public input from walking tours, interviews, surveys, and a visioning workshop, the community has told Horizon Planning what they envision for their Neighborhood Main Streets, the commercial areas along 32nd and 42nd Avenue in Milwaukie.

In the future, the Neighborhood Main Streets are hubs of activity - places where local residents gather to shop, dine, and socialize. A mix of small-scale and locally-owned businesses fit in well to their established residential neighborhoods. Connections to these attractive green main streets from the surrounding areas allow people to safely and easily reach their destinations whether on foot, by bicycle, or by car.

Goals for the Neighborhood Main Streets:

A Vibrant, Local Economy



A mix of locally-owned, small businesses.

A variety of businesses and services that meet everyday shopping and convenience needs, such as eating establishments, grocery stores, barber shops, hardware, garden and craft stores

Safe, Accessible Streets

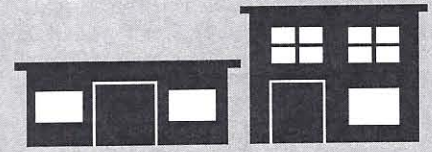


Sidewalks, crossings and street lighting that create a safe environment for pedestrians

Streets that offer safe routes for driving, bicycling, and public transportation

Adequate parking to serve businesses without overwhelming amounts of asphalt

Neighborhood-scale Identity



Businesses are oriented along a main street, whose small scale and design blend easily into the surrounding residential neighborhood.

Places for residents to gather, such as a park, coffee shop, cafe, or pub

Street trees, bioswales, and landscaping that increases the attractiveness of the area

Top Businesses that People Want to See in Neighborhood Main Streets

Small-scale eatery	Family restaurant or Pub	Grocery	Craft/art/fabric store	Personal care/salon
Farmers' market	Bookstore	Gathering areas	Hardware store	Small Offices Library

Top Strengths and Weaknesses the Community has Identified

	Strengths	Weaknesses
32nd Ave	Stable neighborhood	Busy traffic
	Sidewalks	No identity for commercial area
	Residential Neighborhood Feel	Building maintenance
	Trees and Greenery	Lack of walk/bike access
	Lisac's regional draw	Limited parking

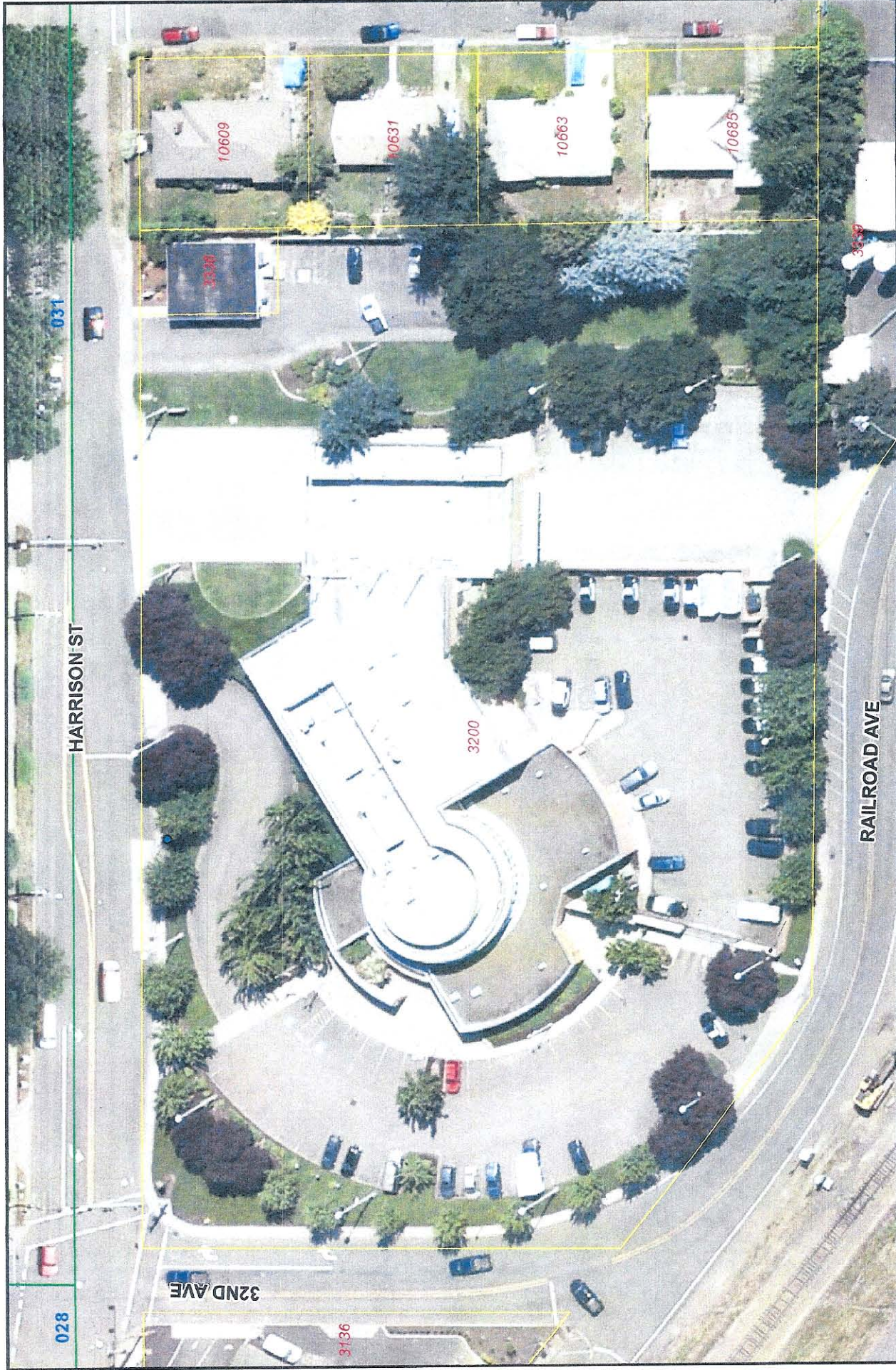
	Strengths	Weaknesses
42nd Ave	Restaurants	Not pedestrian-friendly
	Parking	Bad Parking Circulation
	Community center	Lot of asphalt
	Potential for growth	Ugly car lot
	Safeway	"Residential-looking" commercial buildings
	Lots of traffic, good visibility	

Stay Involved:

Website tinyurl.com/neighborhoodmainstreets
 Email neighborhoodmainstreets@gmail.com
 Twitter @MilwaukieNMSP
 Phone (971) 258-1825

Neighborhood Main Streets Project





The information depicted on this map is for general reference only. The City of Milwaukie does not accept any responsibility for errors, omissions or positional accuracy. There are no warranties, expressed or implied, including the warranty of merchantability or fitness for a particular purpose, accompanying this product.

Milwaukie Planning Dept.
 Data: City of Milwaukie GIS;
 Metro RLIS
 Date: 3/28/2012
 Author: MarquardtR

1 inch = 60 feet

0 12.5 25 50 75 100 Feet

Milwaukie Planning Dept.
 Data: City of Milwaukie GIS;
 Metro RLIS
 Date: 3/28/2012
 Author: MarquardtR

Site Map



MILWAUKIE PUBLIC SAFETY FOUNDATION

Oregon State Registration 148532-95: Tax ID number 56-2366753

[Home](#) | [Bike Giveaway](#) | [Entry 2012 K9 Walk](#) | [Emergency Preparedness](#) | [Police Dinner 2011](#) | [Contact](#)

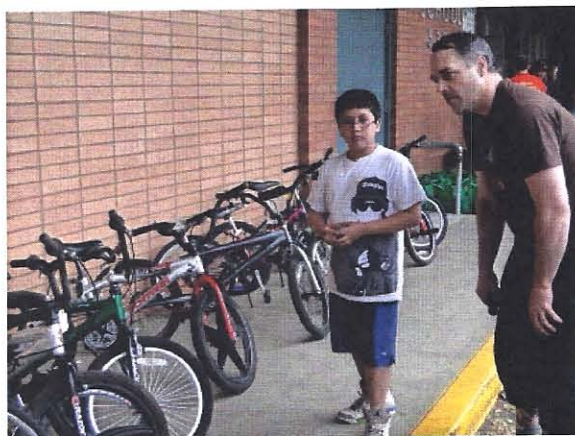
Milwaukie Police Department - Bike Giveaway

To make a donation towards a bike or safety equipment for a Milwaukie school child - please click the donate button



Throughout year the police department responds to dozens of calls about abandoned bicycles. Each found bicycle's serial number is checked to determine whether the property had been reported stolen. The police department must hold the abandoned property for a designated period of time. The police property room is commonly overflowing with unclaimed bicycles. With no known owners, the bikes must eventually be discarded.

The *Bike Commuter*, a Sellwood neighborhood bike shop, generously volunteered to refurbish some of the unclaimed bikes, making sure all the tires, brakes, and steering were in working order. In 2011 Milwaukie Police Chief Bob Jordan then asked the principal of Seth Lewelling Elementary School to help find children that didn't have, but wanted a bicycle. The Milwaukie Public Safety Advisory Committee also helped with this new project. Eight children were selected, and able to choose from a selection of twenty bikes.



In 2012 it was decided to expand the project to other Milwaukie Elementary Schools and the Middle School. But the number of unclaimed abandoned bicycles is way down on last year. We therefore don't have enough to be able to give the children selected to receive a bike the opportunity to choose one that fits them. So can you please help by donating an unwanted or outgrown child's bike to the Milwaukie Police Department, or being kind enough to make a monetary donation to enable us to buy some additional bicycles.

Any help you can give will be really appreciated by the kids. Thanks so very much. If you have a bike but need it collected please call Dave Hedges 971-222-5299, otherwise bikes can be taken to the Public Safety Building, Monday to Friday 8am - 5pm. 503-786-7400.

Creek Committee

Tacoma MAX Station Enhancement Project

Project summary:

The Creek Committee is a community partnership working to enhance Johnson Creek at the new Tacoma St/Johnson Creek MAX station, scheduled to open in 2015. This project will restore salmon habitat in Johnson Creek, construct a boardwalk and creek overlook, and create environmental education opportunities at the station site.

Johnson Creek is one of very few Portland-area streams with active runs of threatened Coho and Chinook salmon, and Steelhead trout. This project will benefit salmon at an exciting time when we are beginning to see positive results of years of investment in Johnson Creek restoration.

Aquatic and streamside habitat features:

- Engineered log and boulder clusters will provide habitat for salmon;
- A side channel will provide resting spots for salmon during high winter flows;
- Native plantings will enhance bird and amphibian habitat and improve water quality.

Environmental education and interpretive features:

- Hundreds of neighborhood residents, daily commuters, and recreational trail users from the nearby Springwater Corridor will enjoy the boardwalk and Johnson Creek overlook.
- Local students will monitor the project's environmental impact and help develop interpretive signs, explaining the habitat features, local ecology and site history;
- Community volunteers and students will remove invasive weeds and plant native shrubs.

Project budget:

An estimated \$150,000 is needed for the aquatic habitat features. The boardwalk and interpretive signage will cost an estimated \$120,000.

How your financial support will help:

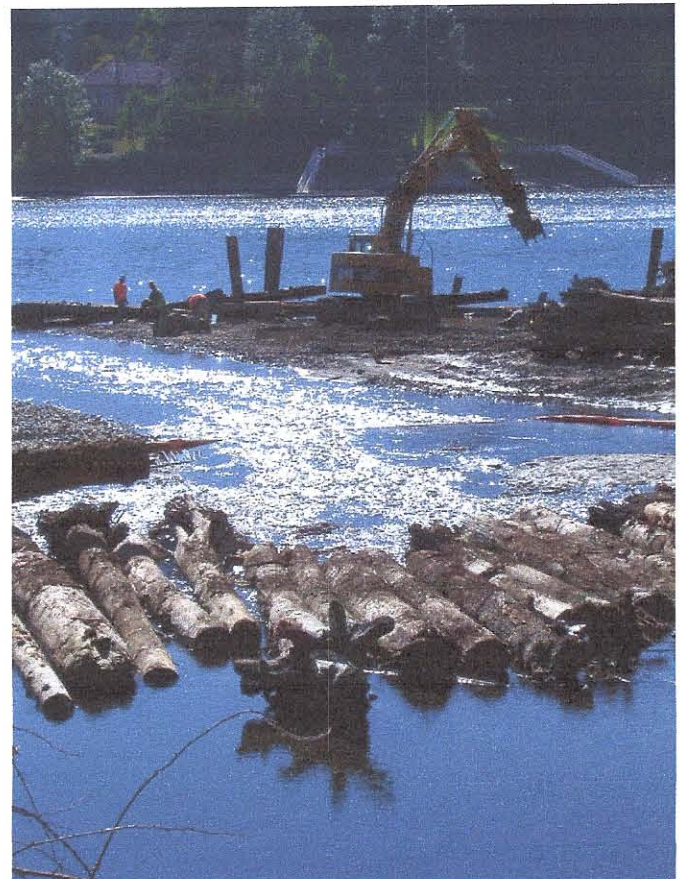
- \$28,000 = installation of 28 engineered log jams;
- \$12,500 = excavation of the side-channel salmon habitat;
- \$10,000 = 10 linear feet of boardwalk (total boardwalk = 100 feet or \$100,000);
- \$5,000 = design and installation of one interpretive sign;
- \$2,500 = one volunteer event to install 2000 native plants;
- \$1,500 = a resting point and bench on the boardwalk.

Going Forward, "Connect the Dots":

The TriMet station project will catalyze the restoration of a wildlife corridor that stretches from the mouth of Johnson Creek through Johnson Creek Park and Tideman Johnson Natural Area to the Errol Creek uplands at SE 45th Avenue. The Creek Committee will work with private landowners and community volunteers to achieve this vision.

For project details and design drawings:

http://www.jcwc.org/pdf/CreekCommitteeUpdate_2.pdf or at http://www.ardenwald.org/files/tsc_Creek-Committee-Update_2.pdf.



A similar habitat project at the mouth of Johnson Creek.



Receipt

Received January 17, 2012

from Ardenwald Neighborhood Assoc.,

Thank You for Your Support...

Milwaukie Public Safety Foundation thanks you
for your participation

\$ 150⁰⁰ for the Officer Recognition Dinner fund.

Without support from people/businesses such as you
it would be very difficult to move forward with our mission...

Thank You once again

Welcome to the Ardenwald-Johnson Creek Neighborhood

About

The Ardenwald Johnson Creek Neighborhood Association represents a community that spans parts of both the City of Portland and the City of Milwaukie. It includes areas of Multnomah County and of Clackamas County. Its boundaries reach from the backyards of the homes along Crystal Springs Boulevard in Southeast Portland's Eastmoreland neighborhood, to the heart of Milwaukie along Harrison and King roads, from the railroad tracks along McLoughlin Boulevard to 42nd Street and Johnson Creek Boulevard in Milwaukie.

Schools

Ardenwald is a family-oriented neighborhood. Our local elementary school – Ardenwald Elementary – is the center of community life. People with families move here to send their kids to Ardenwald. At our neighborhood's Annual Ardenwald Bicycle Parade, a celebration of the September return to school, hundreds of kids and parents walk, ride bikes or stand along the curbs to cheer us on.

Parks

In the heart of the Portland portion of our neighborhood sits **Tideman Johnson Park**, a wildlife area that's home to coyotes, beavers, dozens of varieties of birds and waterfowl (including the occasional bald eagles), and the site of a comprehensive plan to recover salmon and steelhead runs. Tideman Park provides schools with an unmatched opportunity to study fish and wildlife habitat by spending time in it. The metropolitan region's Springwater Corridor passes through Tideman Park, offering bicyclists, joggers and people just out for a stroll respite from more urbanized stretches of the corridor.

Ardenwald Park is adjacent to Ardenwald Elementary, located near Roswell Street and 36th Avenue. Ardenwald Park is home to numerous community activities and events, including the Neighborhood Association's Concerts In the Park series held in August.

Balfour Park (currently undeveloped) We are working hard to raise the funds to design and develop this new neighborhood park on Balfour Street off of 32nd Ave.



Things to do in Milwaukie

Welcome to Milwaukie, you will find lots of things to do in town, here are a few of the more prominent events:

Milwaukie Daze

The Milwaukie Daze Parade and Festival has been one most valued Milwaukie traditions since 1972. Please join us in July for downhome fun, including a parade, music and food.

First Friday

First Friday is a district-wide celebration that occurs on the First Friday April thru October. All First Friday gallery opening receptions are free and open to the public, and the receptions generally run from about 5:00pm until 9:00pm

Farmers Market

The Milwaukie Sunday Farmers' Market started in June 1999. We began our first Sunday with 7 vendors and now have over 55 different vendors each week. The market in the parking lot across from city hall starts on Mother's day an runs through the last sunday in October.

Umbrella Parade

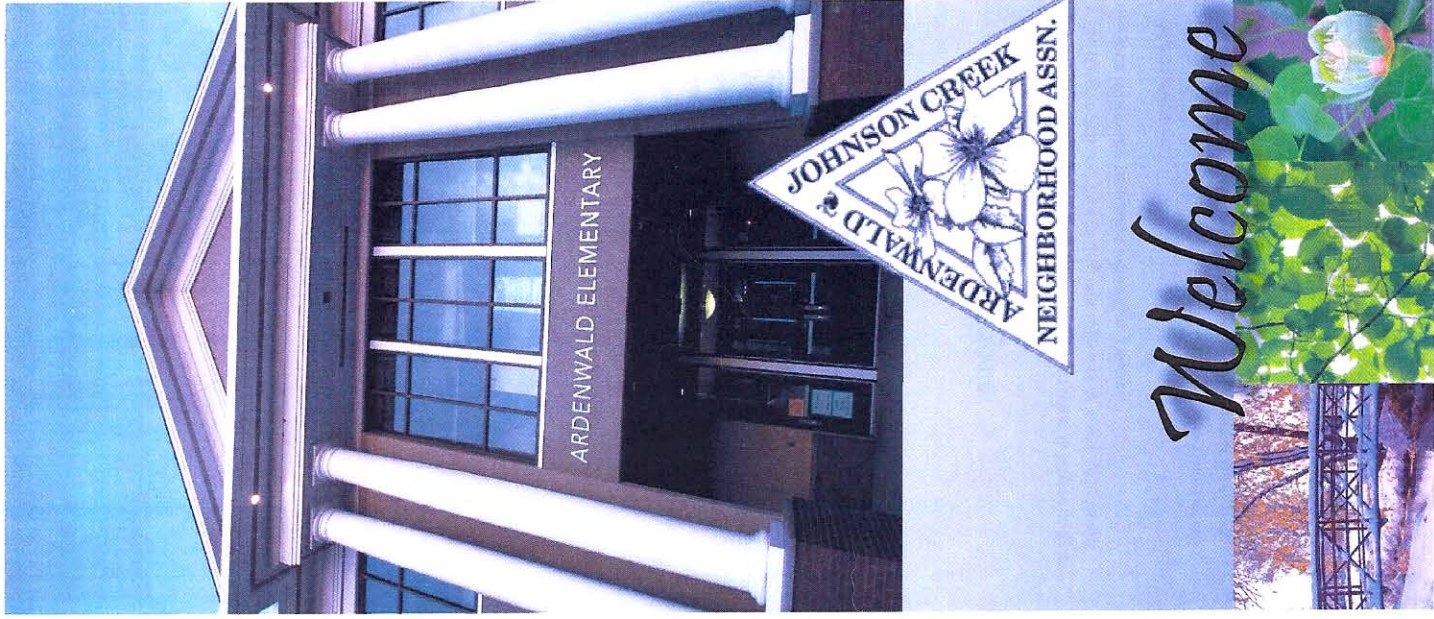
Each December the tree lighting is held in conjunction with the Milwaukie Umbrella Parade. Residents are encouraged to decorate their umbrellas and join the fun.

Winter Solstic Event

This event has been a cherished tration for years. Warm by the bonfire, enjoy treats, and listen to carolers while watching the Christmas ships pass by.



www.ardenwald.org





Community is the fuel that allows common people to obtain uncommon results

Ours is an old fashioned community, where neighbors know each other. When we set up our summer reading program dozens of people come together over books and kids. When we walk over to the concerts, we can wave and our neighbors and often draw them out to join us. People stop to talk to each other. We share recipes, we sit down to coffee together in our kitchens and talk about what our neighborhood needs.

We are glad you are here!

Come join us in our neighborhood activities.

- Summer Concert Series
- Reading in the Park
- Neighborhood meetings
- Partnerships events with Ardenwald Elementary
- Ardenwald Bike Parade
- Walk or Bike to School Day
- Davis Graveyard - free annual Halloween display
- Neighborhood Holiday Party

.... we invite you to participate

On the web

You can find out the latest information on what is happening in the neighborhood by visiting our web site at www.ardenwald.org or following us on Face book or Twitter.

Meetings

Participate in our monthly meetings, the second Tuesday of each month (except July and August). We meet at 6:30 p.m. in the Ardenwald School located between Roswell and Wake streets on 36th Ave.

Go to our web site to subscribe to our neighborhood newsletter and e-mail updates. You can also find us on Face book and Twitter.

Welcome to the Ardenwald-Johnson Creek Neighborhood

Johnson Creek at Tacoma Station

Tri-Met and the Creek Committee are working together to ensure the new light rail station is the best it can be.

Tideman Johnson Park

Volunteers from the neighborhood, along with others, work to restore the Springwater Corridor. Pulling invasive plants out then plant and attend native species to prove the local habitat.

Springwater Trail
For the most part, the trail is well separated from the public road. The route is a scenic one, encompassing wetlands, buttes, agricultural fields and pastures, residential and industrial neighborhoods.

Neighborhood Main Street
Proposed residential friendly commercial district in the Ardenwald neighborhood. Proposed ideas included restaurants, brew pub and small retail businesses.

Balfour Park
Through a grant we acquired land on Balfour Street for a new park. We are currently raising funds to complete the plans and creation of this new park for everyone to share.

Industrial Land Use
The Murphy and McFarland properties are the largest developable areas in Milwaukee. We stay current with any proposals and continue to represent our neighborhoods interest in development matters.

Two counties, One neighborhood.
Our neighborhood has the unique and challenge quality of being between two counties.

Davis Graveyard
Each October the Davis' transforms their yard on 43rd & JCB into one of the largest family friendly Halloween displays in the country. This award-winning display has been featured on both local and national television.

Summer Concert Series
August is the great time to get out and celebrate summer! Each Thursday in August we host a concert series in the Ardenwald Park across from the elementary school. We start the series off with our National Night Out event, a special celebration including our local neighborhood business along with the fire and police department.

Biking Ardenwald
A section of the Springwater Trail, a great bik and walking path, runs through Ardenwald along Johnson Creek. Bike friendly roads:

