

CAMIN

Portland Police Bureau - Offense Report

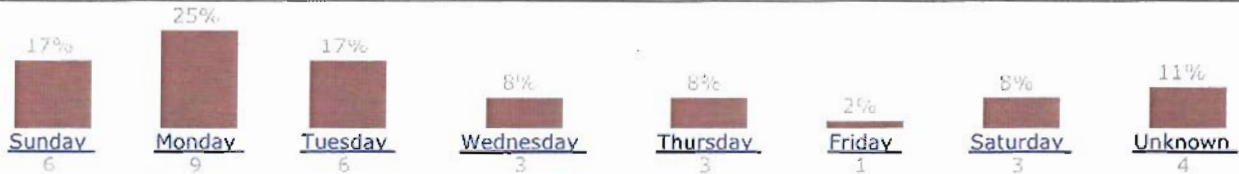
Area	Agency - MILWAUKIE POLICE City - MILWAUKIE	
Date Range	04/01/12 00:00 - 04/30/12 23:59	
Types	01 Homicide, 02 Rape, 03 Robbery, 04 Aggr Assault, 05 Burglary, 06 Larceny, 07 Vehicle Theft, 09 Arson	
Map Legend	■ 05 Burglary ● 06 Larceny	
Disclaimer	Data extracted from CAMIN2 on 05/08/12. Data current as of 05/08/12 19:00. One point may represent more than one incident. Some incidents have no address and are not represented. FOR LAW ENFORCEMENT USE ONLY	

0 3000 FT

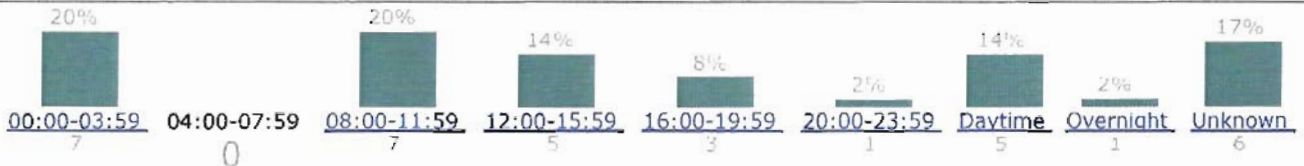
Offense Types



Day Of Week



Time Of Day



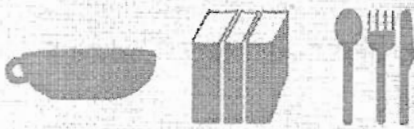
Drop in!

Neighborhood Main Streets Project

Open House

You told us
A Neighborhood Main Street has...

A Vibrant, Local Economy



A variety of locally-owned, small businesses meets everyday shopping and convenience needs for residents of immediate neighborhoods.

A few specialty retailers draw in customers from outside the neighborhood.

Safe, Accessible Streets

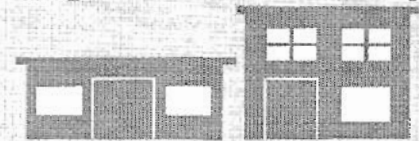


Sidewalks, crossings and street lighting on the Main Streets create a safe and comfortable environment for pedestrians.

Streets in and around the area offer safe routes for walking, driving, bicycling, and public transportation.

Adequate parking serves businesses without overwhelming the pedestrian environment.

Neighborhood-scale Identity



Businesses are oriented along a main street, whose small scale and design blend easily into the surrounding residential neighborhood.

Places are available for residents to gather, such as a park, community center, cafe, or pub.

Street trees, bio-swales, and landscaping increase the attractiveness of the area.

Come view solutions that
will transform 32nd and
42nd Ave into
Neighborhood Main Streets

Proposed solutions will include:

Zoning Changes
Street Improvements
Economic Development Programs

Tell us what works best
for your community!

Drop in anytime on
Saturday May 19th
from 10am to 2pm
Pond House
2515 SE Harrison St.

For Detailed Project Info and to Stay Involved:

Website tinyurl.com/neighborhoodmainstreets

Twitter @MilwaukieNMSP

Contact us:

Email neighborhoodmainstreets@gmail.com

Phone (971) 258-1825

Matt Clark, Executive Director
Johnson Creek Watershed Council
1900 SE Milport Road, Suite B
Milwaukie, OR 97222

Dear Matt,

The Ardenwald--Johnson Creek Neighborhood fully supports the Creek Committee and its goal of building a new salmon habitat and other restoration goals as part of the new Tacoma St./Johnson Creek Station on the Portland-Milwaukie Light Rail project.

As you know, our neighborhood has had a number of issues with TriMet regarding the new PMLR line. But, when the Johnson Creek Watershed Council organized the design charettes to enhance the local station, our neighborhood jumped in with both feet. Numerous activists and board members from the AJC neighborhood attended the charettes.

In fact, as you know, besides supporting the plans for the salmon habitat, the AJC neighborhood proposed the greater plan that is now known as the "Connect the Dots" campaign. We are proud of this contribution to the overall project and to the extension of our goals to encompass the entire reach of Johnson Creek from the Willamette confluence to the Tideman Johnson Park and Errol Creek Highlands area.

We added an at-large board position to our structure, assigning Russ Stoll to coordinate and work with the Creek Committee. Our Community Advisory Committee board member, currently Catherine Goode, has been involved with the Creek Committee since its inception. And our board member, Marianne Colgrove, who is also the head of Friends of Tideman Johnson, has assisted in editing Creek Committee's various proposals and newsletters. And, of course, other members of our AJC group have been assisting wherever they can.

The new PMLR station is in our neighborhood and will be a new western gateway to our neighborhood. We are very excited about the plans thus far. This is one of the most important projects our neighborhood is currently involved in.

We will continue to be there with the Watershed Council, working side-by-side to make sure the Creek Committee concepts come to fruition. Thank you to you personally for your work and to all the supporters of the Watershed Council for leading this effort.

Sincerely,

Matt Rinker
Co-Chair

Jeff Davis
Co-Chair