

When you hear the word “homelessness,” what do you think of? For many people, the word conjures up images of single men living on the streets of skid row. Homelessness is not just an issue for urban areas. It is a serious issue in Clackamas County as well. In fact, the problem is growing. In 2009, 2,534 homeless people were counted in Clackamas County. By 2011, that number had grown to 2,747 people.

Every two years, Clackamas County conducts a homeless count to better understand how homelessness impacts our local community. Volunteers fan out across the county, visiting shelters, food box sites, soup kitchens, and known homeless encampments to survey our homeless population.

The homeless count is coordinated with a larger national effort, and it is incredibly important to the work we do here in H3S. We rely on Federal and State funding to assist our homeless population, and this funding is tied to our homeless population. The count tells us, and our funders how large our homeless population is, and determines our funding for the next two years.

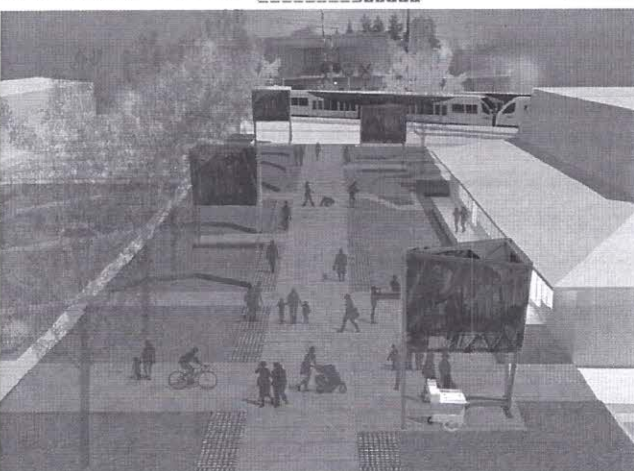
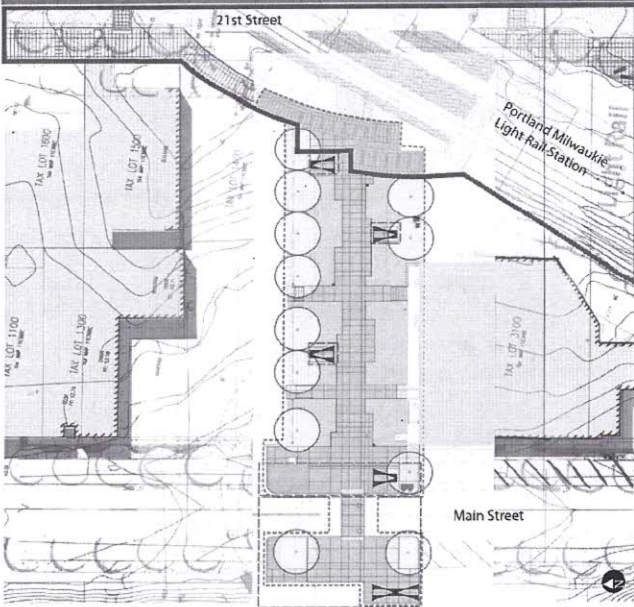
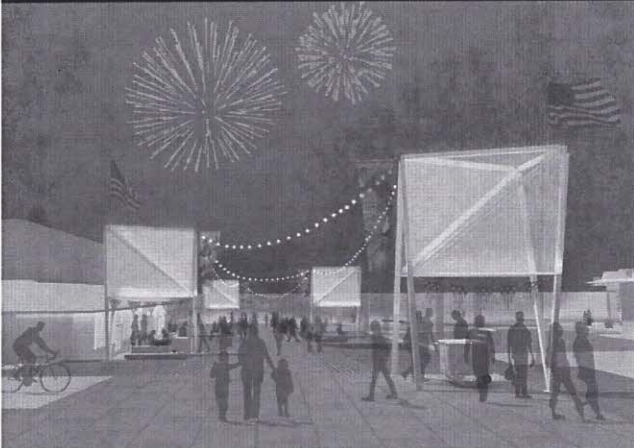
During the count, we count people who are homeless at a point in time. This year the count took place January 30th in cities and counties across the country. Here in Clackamas County, we spend the entire month of January asking people where they will be sleeping on January 30th. This helps us make sure we are able to count everyone accurately.

The homeless count survey asks about people doubled up with others out of necessity, living in cars, campers, RVs, sheds, garages, outbuildings such as barns, tents and people living outdoors. The people living in these places are considered to be homeless.

During the count, volunteers in Clackamas County often talk to people who do not fit the stereotypical image of homelessness. Many individuals who are homeless are working, and many families (including children) are homeless.



# City of Milwaukie Adams Street Connector



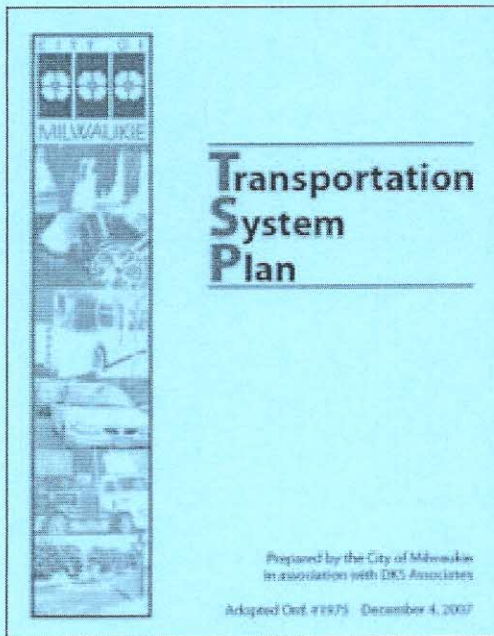
## Adams Street Connector Programming Workshop

February 28, 2013  
Library Pond House  
2215 SE Harrison St

Open House 5-6 pm  
Presentation/Discussion 6-7 pm

RSVP appreciated, not required

For more information or to RSVP contact:  
Kari Svanstrom, Associate Planner  
503-786-7653 or [svanstromk@ci.milwaukie.or.us](mailto:svanstromk@ci.milwaukie.or.us)



## 2013 Project to Update the Transportation System Plan (TSP)

The Transportation System Plan (TSP) is the guiding document for making improvements related to transportation in Milwaukee. The TSP identifies needs for the following:

- Pedestrians
- Bicycles
- Public transit
- Freight
- Street network
- Neighborhood traffic management
- Downtown parking

It includes master plans and project lists for each of those elements.

The TSP got a complete overhaul in 2007, with a lot of public involvement. The current plan is still in good shape and does not need another major revision at this time. However, it does need to be updated to remain consistent with Metro's Regional Transportation Plan (RTP). The City has until December 31, 2013 to make the required changes.

### Key Elements of the 2013 Update

- No major policy changes—the existing plan is well organized and sound
- Extend the forecasting horizon to the year 2035—the current TSP only forecasts to 2030
- Update the various TSP maps to show the final light rail alignment & refresh existing conditions
- Remove completed projects from the master list
- Adjust the prioritization of projects where appropriate to reflect current conditions and goals
- Add new projects that have evolved since 2007 (e.g., Kellogg pedestrian bridge and projects anticipated with the Tacoma Station Area Plan)
- Note: Impacts from the light rail project have already been evaluated and are being mitigated. Light rail will become part of the overall transportation system, and assessments of future needs will happen during the next TSP update.

An Open House to share proposed changes is planned for April/May 2013, before beginning the adoption process with the Planning Commission and City Council

The TSP is available online at <http://www.ci.milwaukie.or.us/engineering/transportation-system-plan>. Copies for viewing are available at the Ledding Library, City Hall, and the Public Works office on Johnson Creek Boulevard. Copies can be purchased from the Public Works office (paper or CD-ROM).

**Questions?** Contact **Brett Kelter** in the Planning Department at **503-786-7657** or [kelverb@ci.milwaukie.or.us](mailto:kelverb@ci.milwaukie.or.us).

As part of a larger 10 Year Company Celebration for ColumbiaCare Services, **Johnson Creek** would like to honor our staff, residents, family members, and partners as we mark our own 3 Amazing Years of operation. You are cordially invited to attend a special brunch that we are preparing on **Wednesday, February 20th at 1:30pm** for this double-birthday event.

ColumbiaCare Services  
is Celebrating an Amazing

# 10 Years!

- ~ Residential Treatment and Crisis Programs ~ Supportive Housing ~
- ~ Mental Health Outpatient & Physical Health Services ~
- ~ Veteran Case Management & Housing Services Programs ~
- ~Center for Suicide Prevention serving Adults & Youth ~

Visit us at [www.columbiacare.org](http://www.columbiacare.org)

Our address is **2808 SE Balfour Street, Milwaukie, OR 97222**  
Please kindly **RSVP by Feb 15<sup>th</sup>** so we can plan accordingly. We hope to see you there!

# CAMIN

**Portland Police Bureau - Offense Report**

Area	Agency - MILWAUKIE POLICE City - MILWAUKIE	
Date Range	01/01/13 00:00 - 01/31/13 23:59	
Types	01 Homicide, 02 Rape, 03 Robbery, 04 Aggr Assault, 05 Burglary, 06 Larceny, 07 Vehicle Theft, 09 Arson	
Map Legend	<ul style="list-style-type: none"> <li>05 Burglary</li> <li>06 Larceny</li> <li>07 Vehicle Theft</li> </ul>	
Disclaimer	Data extracted from CAMIN2 on 02/11/13. Data current as of 02/11/13 19:00. One point may represent more than one incident. Some incidents have no address and are not represented.	

**FOR LAW ENFORCEMENT USE ONLY**

