

**ARDENWALD-JOHNSON CREEK
NEIGHBORHOOD DISTRICT ASSOCIATION
REGULAR MEETING MINUTES
MONDAY, MARCH 23, 2015**

Call to Order

Chairman Jeff Davis calls the meeting to order at 6:35 p.m. at Liz's Creative Cafe (9401 SE 32nd Ave., Milwaukie)

Attendance

Wayne Bradley
Amy Brennan
Chris Davis, Treasurer
Jeff Davis, Chair
Bryan Dorr, Secretary
James Etter

Angel Falconer, Transportation
Lisa Gunion-Rinker, Land Use
Rita Lynn
Ronn Palmer
Matt Rinker, Vice Chair
Jason Wachs

Introductions

Police Report

A Milwaukie Police Department representative was not present. Jeff Davis received an email, saying not much to report businesswise. The email also reminded about the spaghetti feed on April 11 and shredding/drug turn-in day event on April 25th.

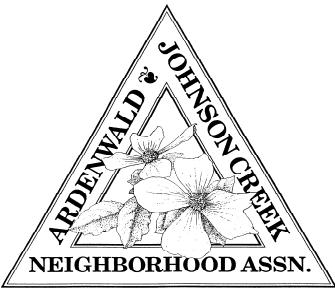
City Report: Jason Wachs

Jason Wachs handed out flyers for the Earth Day Volunteer Event, Saturday, April 18, 2015, 8:45 a.m. Riverfront Park having a grand opening event Friday, May 1, 2015, 4:00 p.m. Friends of Ledding Library having native plant sales Sat., April 18, 2015, 9:00 a.m. to 12:00 p.m. Clackamas County holding comment period for road maintenance. Community Recycling Event, Milwaukie Elks, Sat., April 25, 2015, 10:00 a.m. to 2:00 p.m.

Jason also updated on the Adopt-A-Road recommended roads for the program are SE 32nd Ave., SE 42nd Ave., and SE Roswell St. The city would buy a startup kit like signs, tools, bags, and safety vests. The work frequency would be determined. The parks maintain the parks land. Jeff Davis will be honored at the next Milwaukie City Council regular meeting for his work on the Arts Committee.

A resident commented on homeless/transients sleeping in doorways at businesses in downtown Milwaukie and believes the problem may increase with the opening of the MAX line. There's also been reports of people observed sleeping along the Springwater Corridor Trail.

May 1, 2015, the quiet zone will go in effect in the downtown crossing. No quiet zone for the SE Mailwell crossing near the west boundary of Ardenwald.



**ARDENWALD-JOHNSON CREEK
NEIGHBORHOOD DISTRICT ASSOCIATION
REGULAR MEETING MINUTES
MONDAY, MARCH 23, 2015**

Is there an ordinance or prohibition on panhandling in Milwaukie? Jason isn't sure but will check into it.

Clackamas Fire

No Clackamas Fire representative attended. No report.

Parks Update: Lisa Gunion-Rinker

Lisa Gunion-Rinker is on the Parks Board for the City of Milwaukie. The parks are in the master planning process. The Parks has been working on the Heritage Tree and Tree City USA status. She also discussed the trees being cut down in the neighborhood, including a redwood cut down on SE Balfour St. The bond measure did not pass this year. Riverfront Park opens May 1, 2015. Lisa is also looking for feedback to take back to the Parks Board.

Lisa discussed concerns of the Parks Board in the Balfour Park in the tentative community garden area, including the water meter that would cost \$5,000 to purchase. There will be a plant sale in May to raise funds for Balfour Park project. When will the park be completed? Once the master plan is done, then grants could be applied for. Lisa estimates the park could cost about \$300,000 for grading and construction work. The plan must be approved by the neighborhood then the city. The master plan approval should be done by the end of the year. The grants could be applied in small stages. Wichita Parks is already ahead with already having a master plan. Lisa also mentioned she couldn't get the plant sale dates into the April Pilot article. Bryan Dorr had mentioned the plant sale in April article for the towards the end of May.

Other Comments

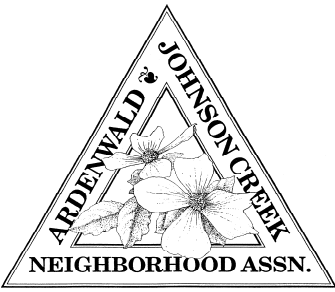
None.

May Neighborhood Meeting and Board Meeting

Memorial Day is on the fourth Monday, therefore, the May regular neighborhood meeting and board elections will be on Tuesday, May 26, 2015.

Committee Reports

Chair: Jeff Davis is working on concerts. Two people have been booked. There are two Thursdays that still need to be booked. The bookings should be complete by the next meeting. We are also talking about serving our own food, but need volunteers to cook and serve the food. Will look into requirements for food handler's card. The food carts have been dwindling. We hope to use the funds from serving our own food to offset the costs of the concerts.



**ARDENWALD-JOHNSON CREEK
NEIGHBORHOOD DISTRICT ASSOCIATION
REGULAR MEETING MINUTES
MONDAY, MARCH 23, 2015**

Jeff also spoke with David Aschenbrenner about the neighborhood borders. There is a proposal to change the boundaries. The boundaries would be determined by major streets. Jeff handed the proposed map, but is not official.

Vice Chair: Matt Rinker was involved with a conversation with Columbia Care involving a recently opened non-secure residential treatment facility in Springfield, Oregon. Jennifer Sewitsky of Columbia Care contacted Matt, seeking the NDA's response and experience with the Johnson Creek secured facility. Springfield does not have a structured neighborhood associations like Milwaukie. He does not believe a letter would carry much influence as talking face-to-face with the neighbors. The facility is planning a second open house and hope to invite NDA reps for the second open house. Ardenwald is the only neighborhood with a Good Neighborhood Agreement with Columbia Care.

Secretary: Bryan Dorr asked for May Pilot article writer. Lisa Gunion-Rinker will write the May Pilot. Bryan also noted that few years back regarding the vegan strip club issue. Dusk Til' Dawn: Casa Diablo II is opening up on SE McLoughlin next to Acropolis.

Webmaster: Bryan Dorr reported the email subscribers are holding steady, between 165 and 170 subscribers. Twitter has less than 100 followers. Jeff Davis said Facebook has 162 "Page Likes."

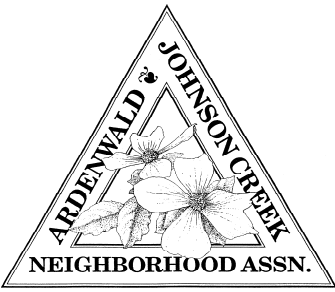
Treasurer: Chris Davis reported the expenses. \$34.50 for meeting food, \$50.00 for Oregon business registration, \$9.95 for Quicken services which was then cancelled after learning about the charge, received \$60.91 from SEUL. Checks: \$100.00 to Milwaukie Public Safety Foundation (Officers of the Year Dinner), \$150.00 for Vietnam Wall Memorial, \$120.00 for Milwaukie Museum Archiving. Balance is \$4262.53.

Land Use: Lisa Gunion-Rinker reported a win for the neighborhood on the Eastmoreland Racquet Club hearing for the non-conforming use. The hearings officer reviewed the intended use going back to 1976 and denied the non-conforming use permit. New houses going in along SE Tacoma St.

Southeast Uplift: Lisa Gunion-Rinker reported mulching done at Tideman Johnson Park. Some plantings got washed away after the high water from recent rain.

Transportation: Angel Falconer discussed the residential parking program. The planners found some pitfalls in the program and will have to revisit. The planners will come to the NDA meeting next month. Hopefully to have parking regulations in place by time of light rail opening. Tacoma St./Johnson Creek Station garage has been scrapped.

Bryan Dorr commented from recent Bike Milwaukie bike ride about the access stairs between the Springwater Trail and Tacoma St. Station access path at bottom of the embankment next to pedestrian bridge over tracks being cut, thus adding an extra 0.2 mile walk for many Ardenwald residents. Walkers would walk west clear down to SE McLoughlin and back east then north to the station. Bryan also commented on the need



**ARDENWALD-JOHNSON CREEK
NEIGHBORHOOD DISTRICT ASSOCIATION
REGULAR MEETING MINUTES
MONDAY, MARCH 23, 2015**

to have the loose gravel connector between SE 28th Ave. and Springwater Trail paved to improve safety for bicyclists, which was scrapped in the Walk Safely Milwaukie Program.

Public Safety Advisory Committee: Bryan Dorr reported Kim Travis was approved by Milwaukie City Council on March 17th.

Membership: A brief mention about mailing concert post cards.

Art: No report.

Move Forward Milwaukie: Second MFM work session is Tuesday, March 24, 2015, City Hall, 6:30 p.m.

Meeting Minutes Approval

Approve the February 23, 2015, regular neighborhood meeting minutes as-is. Chris Davis moves, Ronn Palmer seconds. **Yea: Unanimous. Nay: None.**

Adjourn

Meeting adjourned: 8:24 p.m.

Minutes prepared and submitted on March 23, 2015, by:

Bryan Dorr

Secretary
Ardenwald-Johnson Creek Neighborhood District Association

Phone: (503) 866-4805

E-mail: bdorr@ajc.bjdorr.com

Website: www.Ardenwald.org

Facebook: www.Facebook.com/ArdenwaldJCNDAA

Twitter: www.Twitter.com/Ardenwald_JC_NA

Minutes approved on April 27, 2015: **Yea: UNANIMOUS Nay: NONE**

Decemeber

12/23/14		Rite plates and wine for Xmas dinner	(\$51.65)
11/24/2014		Food for Xmas dinner	(\$34.50)
	2014 Total		<u><u>\$5,130.37</u></u>

January

		Liz's Café meeting food	(\$36.00)
--	--	-------------------------	-----------

ENDING BALANCE \$4,666.07

February

		#1029 void	
	card	Liz's Café	(\$34.50)

ENDING BALANCE \$4,631.57

March

3/13/815	card	Oregon Business Registration	(\$50.00)
03/05/15		Quicken	(\$9.95)
March 5, 2015	deposit	SE Uplift	60.91

Public Safety (\$100.00)
Wall Memorial (\$150.00)
Historical (\$120.00)

ENDING BALANCE \$4,262.53



THE CITY OF MILWAUKIE 2015

EARTH DAY VOLUNTEER EVENT

Sat., April 18

8:45 am: Meet at City Hall (10722 SE Main St.)
Orientation & Breakfast

11:30 am: Reconvene at City Hall for Lunch!

Join your neighbors this Earth Day to cleanup and beautify downtown and the Johnson Creek confluence. The event will also host a plant and seed swap for those interested.

- **SIGN UP TODAY:** Please register at <http://tinyurl.com/mm5d55e>, contact Jason Wachs at (503) 786-7568 or WachsJ@MilwaukieOregon.gov or arrive by 8:45 a.m. the day of the event.
- If you have a mat for kneeling you may bring one. A limited supply of “pick up” tools will be available so if you have one bring it along. Garbage bags, safety vests, vinyl gloves, shovels, rakes, etc., will be provided.

Partners &
Sponsors:



SOLVE
IT'S OUR NATURE TO
VOLUNTEER



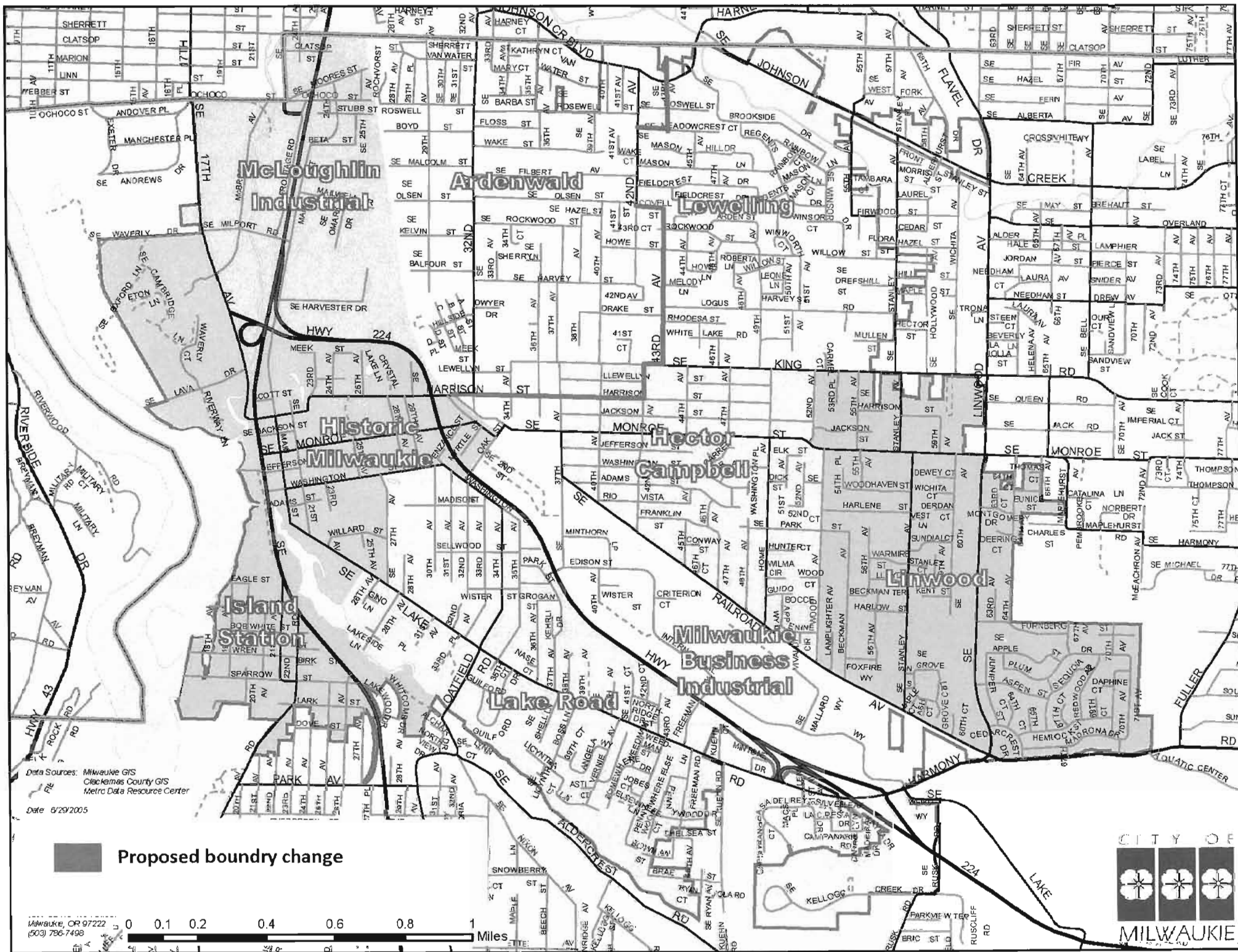
Johnson Creek
Watershed Council

WM
WASTE MANAGEMENT



Pietro's Pizza





Data Sources: Milwaukie GIS
 Clatsop County GIS
 Metro Data Resource Center
 Date: 6/29/2005

 Proposed boundary change

Milwaukie, OR 97222
 (503) 786-7498

0 0.1 0.2 0.4 0.6 0.8 1 Miles



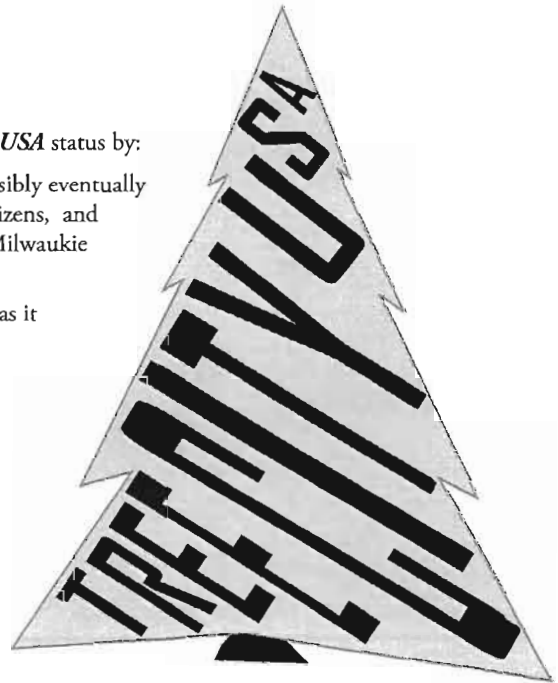


TREE CITY USA

Milwaukie's Parks & Recreation Board is recommending the City gain *Tree City USA* status by:

1. Establishing a tree board/committee. This will initially be the PARB and possibly eventually a separate board. The current and future boards should include interested citizens, and other professional tree experts. This board will be supported by the City of Milwaukie public works and other department personnel with appropriate expertise.
2. Reviewing and modifying (as appropriate) the current *City Tree Ordinance* as it applies to public lands to conform to Tree City USA requirements.
3. Preparing a budget request for consideration by City Council to meet Tree City USA requirements. This will also require an analysis of current budget expenditures that are consistent with Tree City USA requirements.
4. Planning an *Arbor Day Celebration*.

The Park and Recreation Board also recommends the City review and revise the City's current street tree list to include more native species, as appropriate.

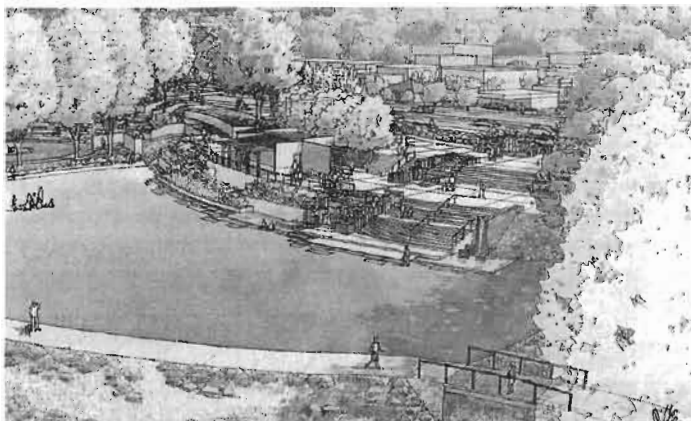


MILWAUKIE RIVERFRONT PARK

Phase II of Milwaukie Riverfront Park is nearing completion and the emphasis returns to finding funding for the remaining elements of the Milwaukie Riverfront Park Plan. The park on Milwaukie Bay is expected to attract not only local citizens but visitors who are seeking riverfront fun, recreation and activities of all kinds. With an easily accessible location, ample parking and special riverfront amenities, the new park will become a favored destination for people throughout the region and a center of civic life.

Remaining elements include:

- An open air *Amphitheater*, a new performance venue for cultural arts events with seating for 250.
- An attractive, multi-use *Main Plaza* for festivals and public gatherings for up to 1,500. This open space will be accented by a pavilion and cascading fountain.
- A state-of-the-art *Children's Playground* designed for toddlers to twelve year-olds.



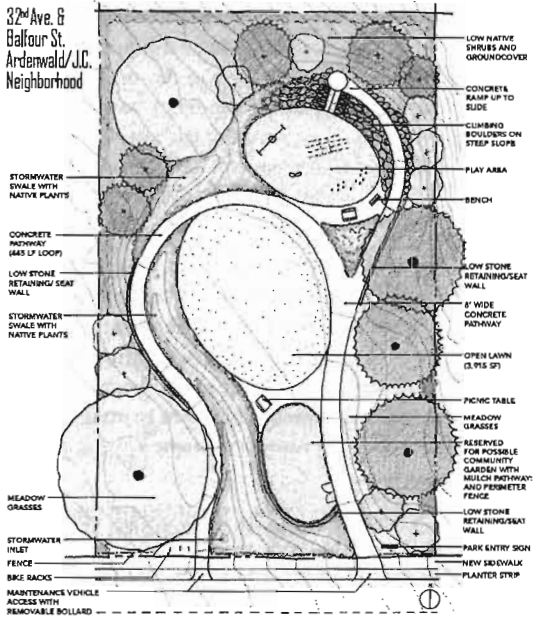


FOUR NEIGHBORHOOD PARKS

North Clackamas Parks & Recreation District (NCPRD) and the City of Milwaukie are partnering to develop Master Plans for three Neighborhood Parks: **Balfour**, **Bowman/Brae**, **Robert Kronberg Park**, and to develop 30% construction plans and specifications for **Wichita Park**.

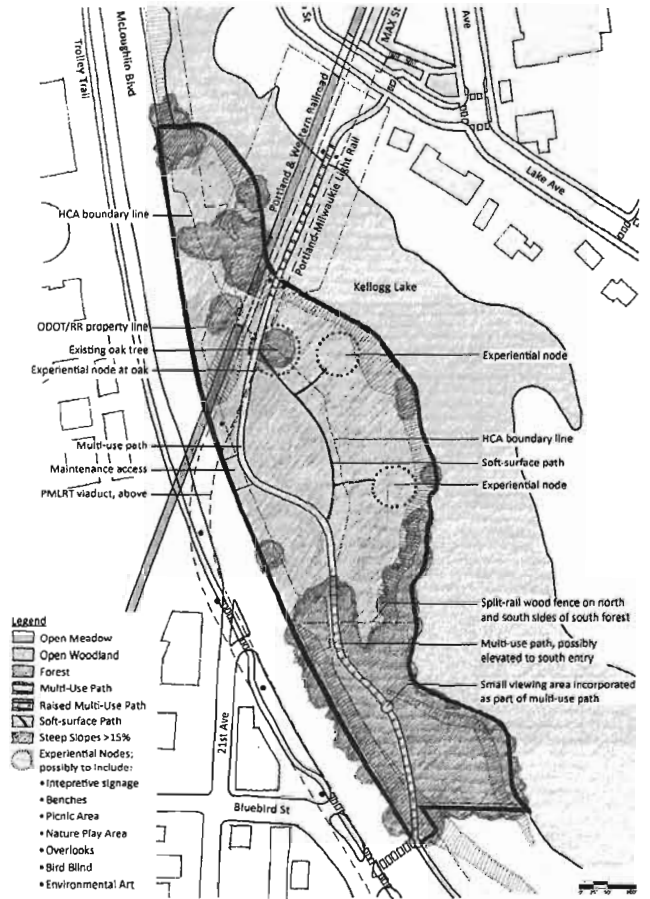
On Jan. 14, 2015 the NCPRD endorsed the three **final draft master plans** and recommended that staff enter into the next steps of the City's planning review and approval process.

BALFOUR PARK REFINED CONCEPT



KRONBERG PARK

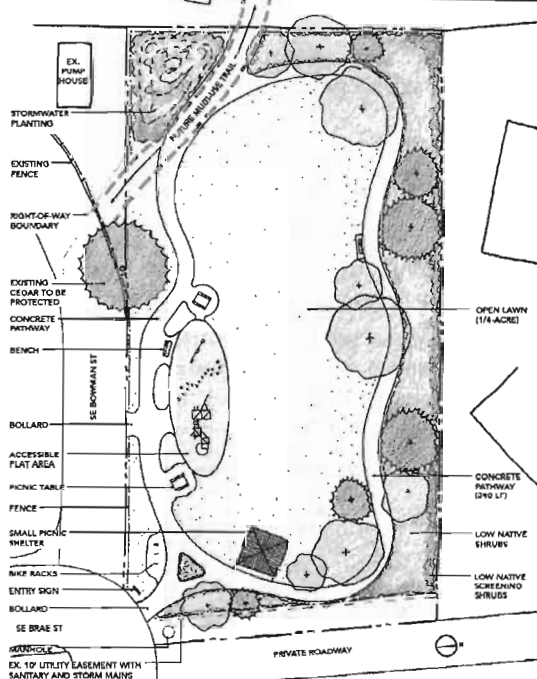
REFINED CONCEPT



BOWMAN-BRAE PARK

REFINED CONCEPT

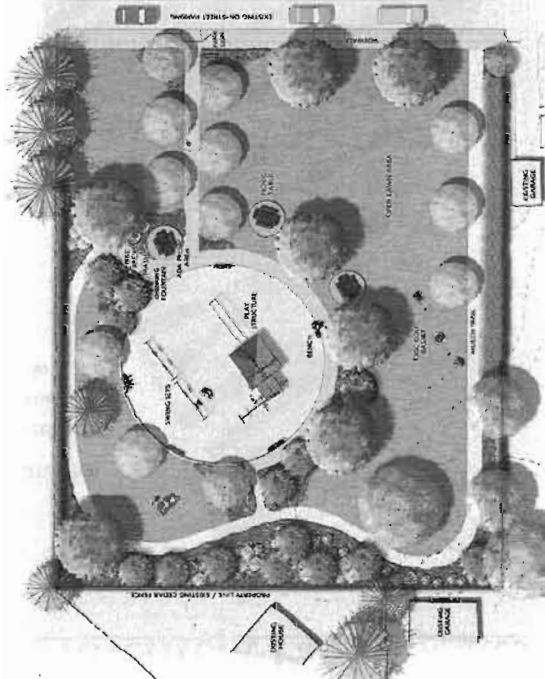
Lake Road Neighborhood



WICHITA PARK

MASTER PLAN

Monroe St. & 59th Ave. Linwood Neighborhood



More information on reverse